



DENPARK
BROCHURE

DENPARK PRODUCTS

PROFESSIONAL SCANNER MANUFACTURER



Our History

- ◆ Focused on providing professional vision solutions
- ◆ Denpark established

2019



- ◆ L3 was launched on December
- ◆ Developed the 3D desktop scanner

2021

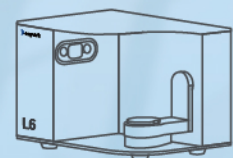


2020

- ◆ Focused on dental industry
- ◆ Set up the senior R&D team with rich dental experience

2022

- ◆ Started the IOS project
- ◆ L6 were launched on May





- ◆ L9 were launched on July
- ◆ Initiated overseas expansion
- ◆ Achieved significant popularity in the domestic market

2023



- ◆ Face scanner released

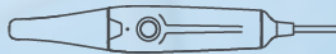


- ◆ C5 was launched on January

2025

2024

- ◆ C3 was launched on August



- ◆ Z series was launched on March



Why Denpark Scanner?

- ▶ It's your first choice



Humanized design

Semi-open structure, prevent interference, convenient operation; The button is positioned in the front for easy switching.



Open system

Support STL, PLY, OBJ data formats; Compatible with mainstream CAD software.



Most cost-efficient

Do more with less.
The first choice to get a scanner.



Wide application

Restorations orthodontics and other scenarios. Support stone, impression, wax, texture, articulator and other types.



Professional team

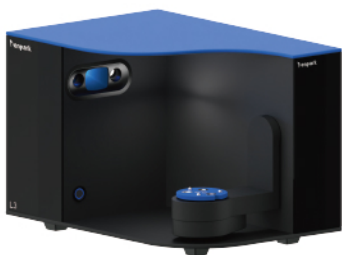
A senior R&D team with more than 10 years of dental industry experience.



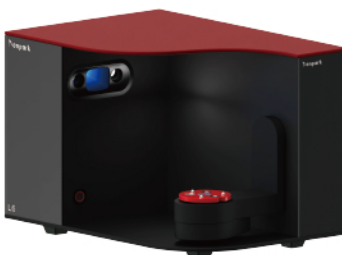
Super performance

Fast speed and high precision.
Almost no post-processing time.

L-series



L3



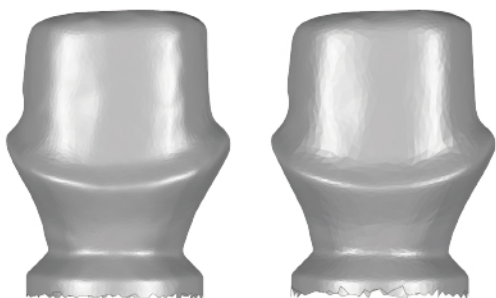
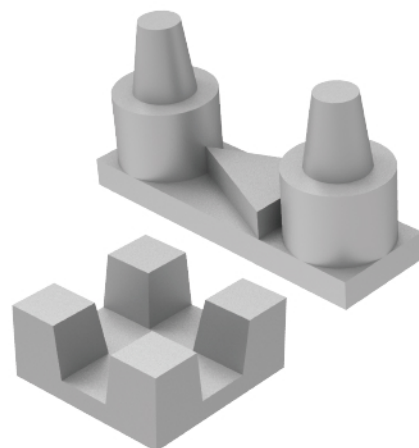
L6



L9

Higher precision

According to the ISO-12836 test sample evaluation procedure, the equipment accuracy was obtained:
L3: $\leq 7\mu\text{m}$, L6: $\leq 5\mu\text{m}$, L9 $\leq 5\mu\text{m}$.

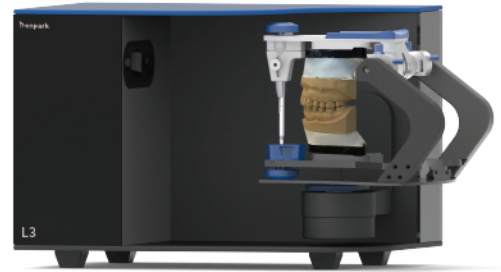


Excellent details

The dual 3.0MP camera allows L6 to have more excellent details and scanning performance, comparable to other brands of 5.0MP scanners.

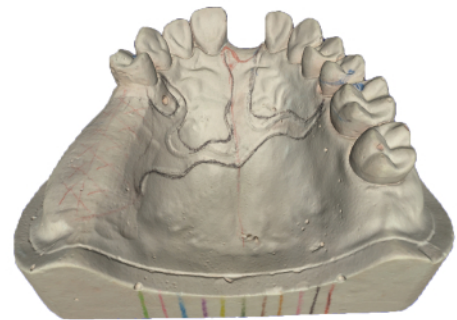
Articulator scanning

The articulator scanning mode supports multiple types of articulator scanning, supports static and dynamic scanning switching of the articulator. The dynamic articulator scanning mode scans the entire buccal surface occlusion to improve the accuracy of alignment.



True color texture

With the help of color restoration technology, L3 can obtain high saturation and high color brightness of the true model color acquisition by using the mono camera, and capturing every inch of color details, making the model more realistic.



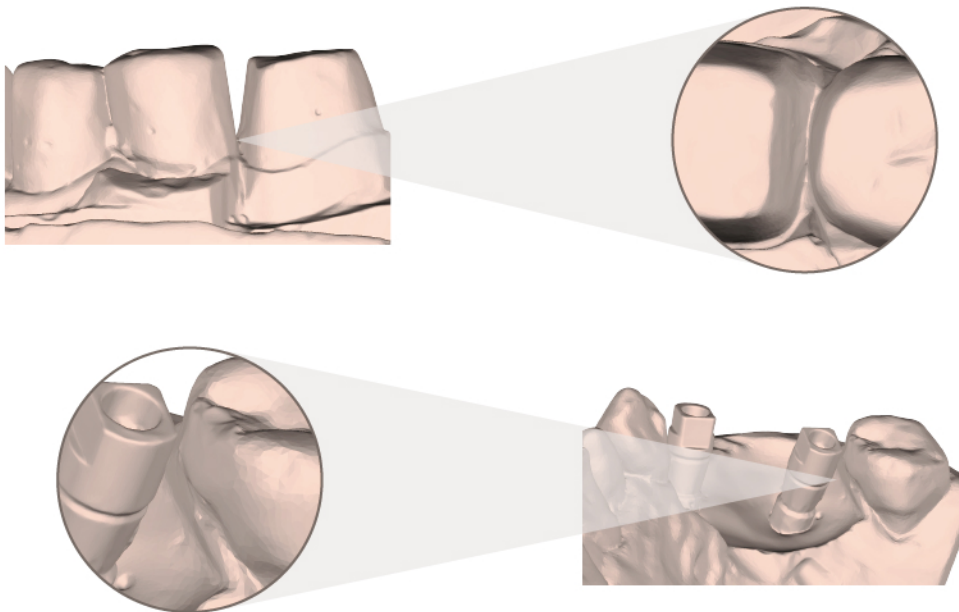
Flexible workflow

The brand-new software interface covers various common tools, the process can be switched freely, and the operation is simple and convenient.



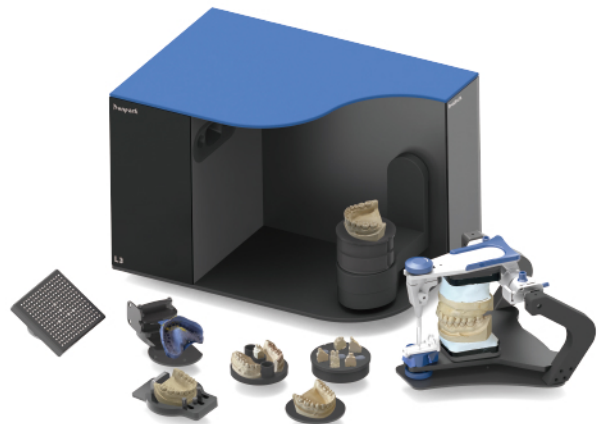
Intelligently add scan

The intelligent scanning mode of L series can adjust the scanning angle according to the hole area. With the help of multi-mesh hybrid 3D reconstruction algorithm, the missing areas of data were scanned better and more completely, and the efficiency of supplementary scanning and the integrity of model data were improved.



Various scan types

Support stone, impression, wax, texture, articulator and other types. Meets a variety of scanning needs.



L3-Entry level and faster scanner

The first choice for the dental laboratory. Highly cost-effective products with very fast scan speed and very stable metal structure.

5s

Occlusion

11s

Full arch

27s

Impression

12s

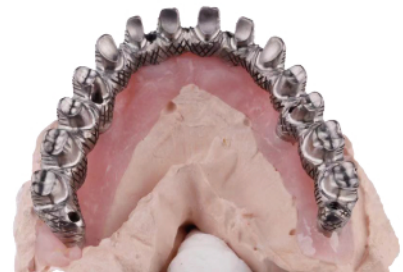
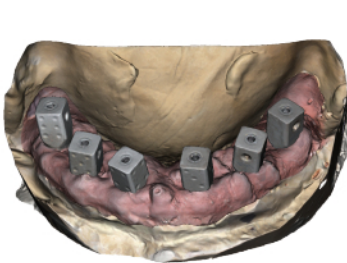
1-4 dies

20s

5-8 dies

L6-More professional implant scanner

The high pixel camera makes the L6 more accurate, which can easily capture the edge details of the abutment and the characteristics of the scanning. It can be widely used in abutment, scanbody, bridges and other common implant types, making it more professional.



L9- Higher level of scanning experience

The L series launches a new product L9, equipped with a 5-megapixel camera, which makes the model data more realistic and the data effect better. With the support of the new software, you will get a high-level scanning experience.

Z-series



Faster scanning speed

100% increase in scanning speed
50% increase in scanning efficiency



speed upgrade

Full arch : 9s
Full arch impression : 19s



Smooth & efficient

Scanning is very smooth
Extremely silky scanning process
Doubling the efficiency



Hardware upgrade

Upgraded overall appearance
Using an open structure
Making it smaller and lighter

Category	Z5	Z9
Camera resolution	2*2.4MP	2*5.0MP
Accuracy(ISO12836)	≤6μm	≤5μm
Full arch scan speed	9s	13s
Full arch impression scan speed	19s	29s
Scan area	96*82*60mm	
Dimension	393*271*264mm	
Weight	6kg	

I Advantages

01

Whole functions & flexible workflow

- Support various scan mode & model types
- Support dynamic & static articulator scan
- Switch the workflow freely
- Support articulator transfer and virtual simulation on EXOCAD

02

No need for physical dongle

- Electronic authorization and no need to send physical doongle
- Never have to worry about losing or damaging your dongle

03

Excellent and timely service

- The professional team provide the professional service timely
- No need to worry no service or technical support

Fast & less time for post-process

04

- Fast and smooth scanning
- Less post-processing time
- At least 45% efficiency increased

Very stable & less problem

05

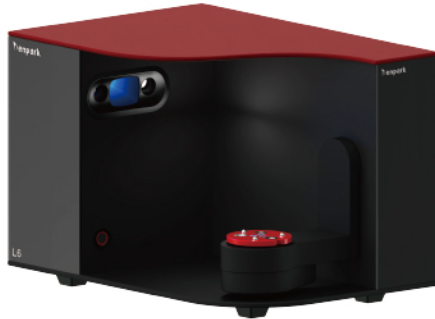
- Sold over one year and no broken issues
- Very few problems need to solve
- Almost all clients are very happy to use

Excellent technology rapid updates and iterations

06

- Always make the excellent technology to our partner and clients
- Always make the best products under the requirement of market and clients

Technical Parameters



Category	L3	L6	L9	Z5	Z9
Camera	2*1.3MP	2*3.0MP	2*5.0MP	2*2.4MP	2*5.0MP
Accuracy(ISO12836)	≤7μm	≤5μm	≤5μm	≤6μm	≤5μm
Full arch	11s	13s	13s	9s	13s
Full arch impression	27s	29s	29s	19s	29s
Scan area	106*84*60mm	94*89*60mm	94*89*60mm	96*82*60mm	
Dimension	393*271*274mm			393*271*264mm	
Weight	9kg			6kg	
Package weight	14kg			12kg	
Package size	50×40×40cm				
Output Format	STL、PLY、OBJ				
Light Source	Blue Light				
Texture scanning	True colour scanning				
Power Supply	DC 24V				
Interface	USB 3.0				
Articulator Scan	Dynamic / static; Support articulator transfer				

New Level Of Intraoral Scanner

More convenient More efficient



First Version — C3

Product Upgrade

Second Version — C5

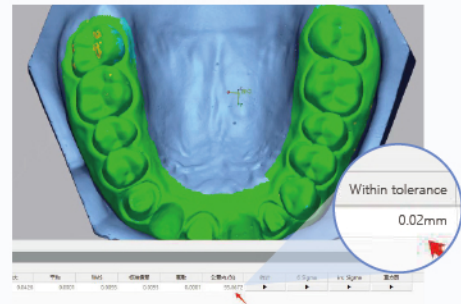


C5 Advantages

Ultra-high Precision

>>> 01

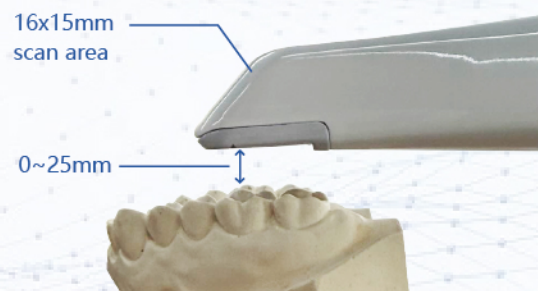
Multiple comparisons of the data from the C5 intraoral scanner and the table scanner L6 reveal that within an error range of $\pm 0.02\text{mm}$, the coincidence degree of the two model data can reach over 90%. (L6 Accuracy $\leq 5\mu\text{m}$)



Larger Scan Area and Depth of Field

>>> 02

The 16mm x 15mm larger scan area and the 25mm larger scan depth of field meet the majority of market demands.



Higher Frame Rate

>>> 03

The scanning frame rate of the C5 reaches up to 38 FPS, enabling extremely rapid and efficient scanning with image formation within one second. Higher frame rate brings extreme speed experience.

Smooth Scanning

»» 04

The independently developed hardware combined with software, along with excellent algorithms and processing speed, ensures highly smooth and rapid scanning of the C5 intraoral scanner.

Lightweight Design

»» 05

The upgraded C5 weighs merely 200g, being extremely lightweight and offering an extremely comfortable and excellent operation experience.

Anti-fogging function

»» 06

The built-in automatic heating system can effectively prevent the fog on the mirror surface while the oral scanning

Detachable Cable

»» 07

The portable plug-and-pull design ensures convenient carrying, disassembly, and maintenance.



Technical Parameters

	 	
	Category	C3
Accuracy(ISO12836)	Full arch: 10μm	Full arch: 10μm
Scanning Depths	20 ~ 25mm	20 ~ 25mm
Scanning frame	Up to 25 FPS	Up to 38 FPS
Weight	260g	200g
Scan area	Standard Tip:14×13mm	Standard Tip:16×15mm
	Mini Tip:12×10mm	Mini Tip:12×10mm
Dimension(L×W×H)	260×45×47mm	245×40×38mm
Power Input	9V DC	12V DC
Light source	LED	
Output	STL、PLY、OBJ	
Connector	USB 3.0	

Computer Configuration

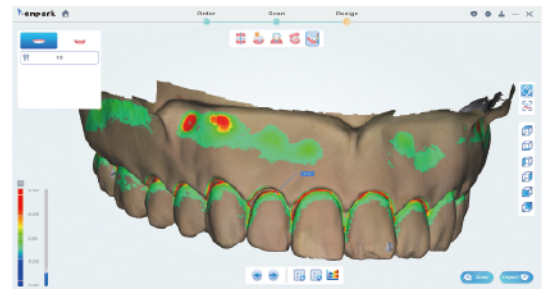
Type	Recommended Configuration	Minimum configuration
CPU	Intel i7 13700 or above	Intel i7 10700 or above
Memory	32G or above	16G or above
Graphics Card	NVIDIA GeForce GTX2060 SUPER 8G or above	NVIDIA GeForce GTX1660 6G or above
Operating System	Windows11 64-bit	Windows10 64-bit

Software Introduction



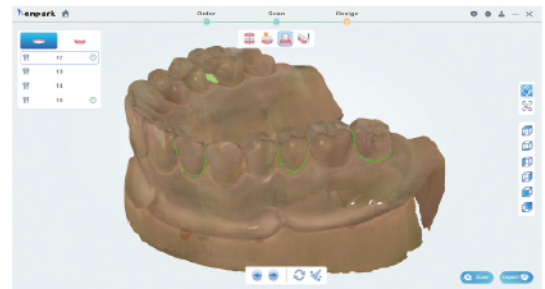
Undercut detection

Undercut detection function can calculate and measure the undercut area of the model



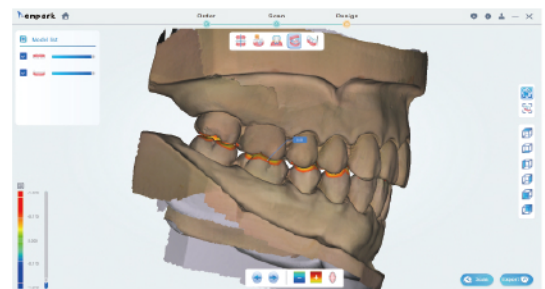
Margin editing

Margin editing can draw the margin line of the prepared crown at the clinical side and improve efficiency



Occlusal test

The color gradient can display the distance, accurately measure the interocclusal distance, and effectively improve the effect of tooth preparation



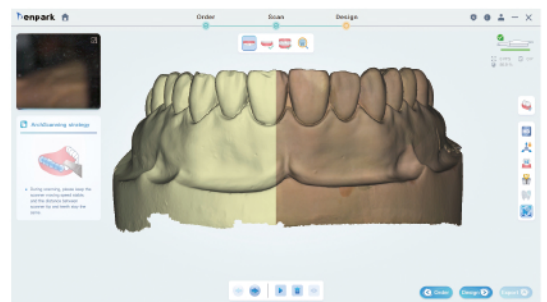
Hole detection

When the hole detection function is turned on, the model data regions that have not been scanned will be prompted.



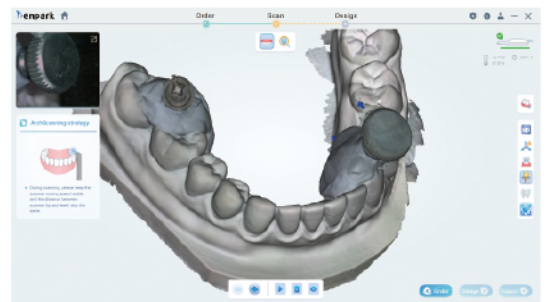
Texture scan

Truly restore the color of the oral environment, more realistic display of the mouth and teeth situation.



Metal scan

The metal scanning function is suitable for scanning metal. When this function is turned on, the speed and data integrity of scanning metal teeth can be improved.



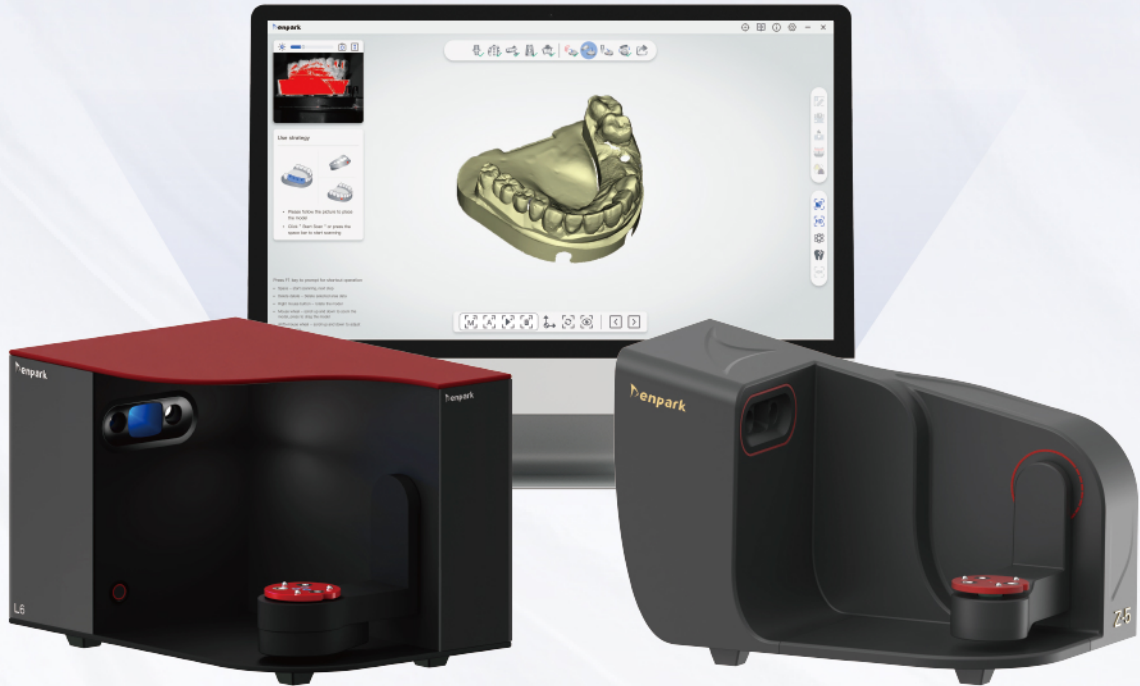
AI recognition

During the intraoral scanning process, redundant data such as tongue, buccal and soft tissue data will be automatically removed, making the oral scan process faster and cleaner.

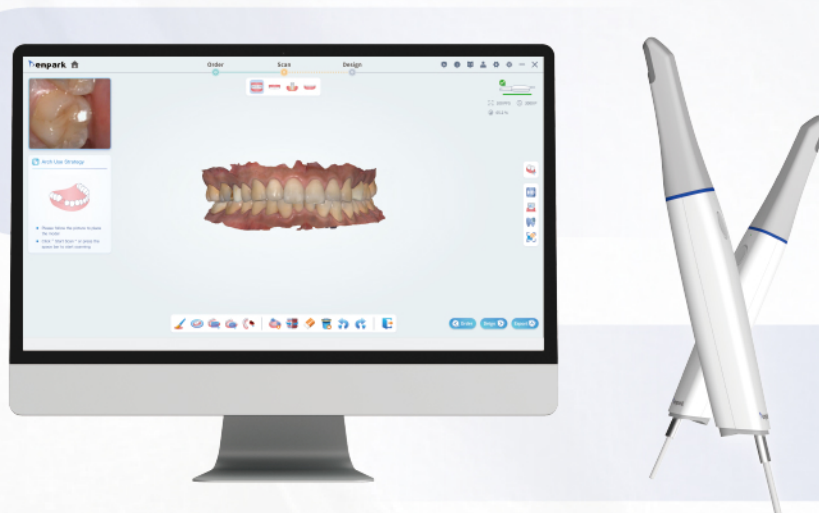


DIGITAL DENTAL SOLUTIONS

L-Series & Z-Series lab scanner



C series Intraoral scanner






PROFESSIONAL SCANNER MANUFACTURER

 **denpark**

 网站: denpark3d.com

 Email: info@denpark3d.com

 Facebook: [denpark tech](https://www.facebook.com/denparktech)

